



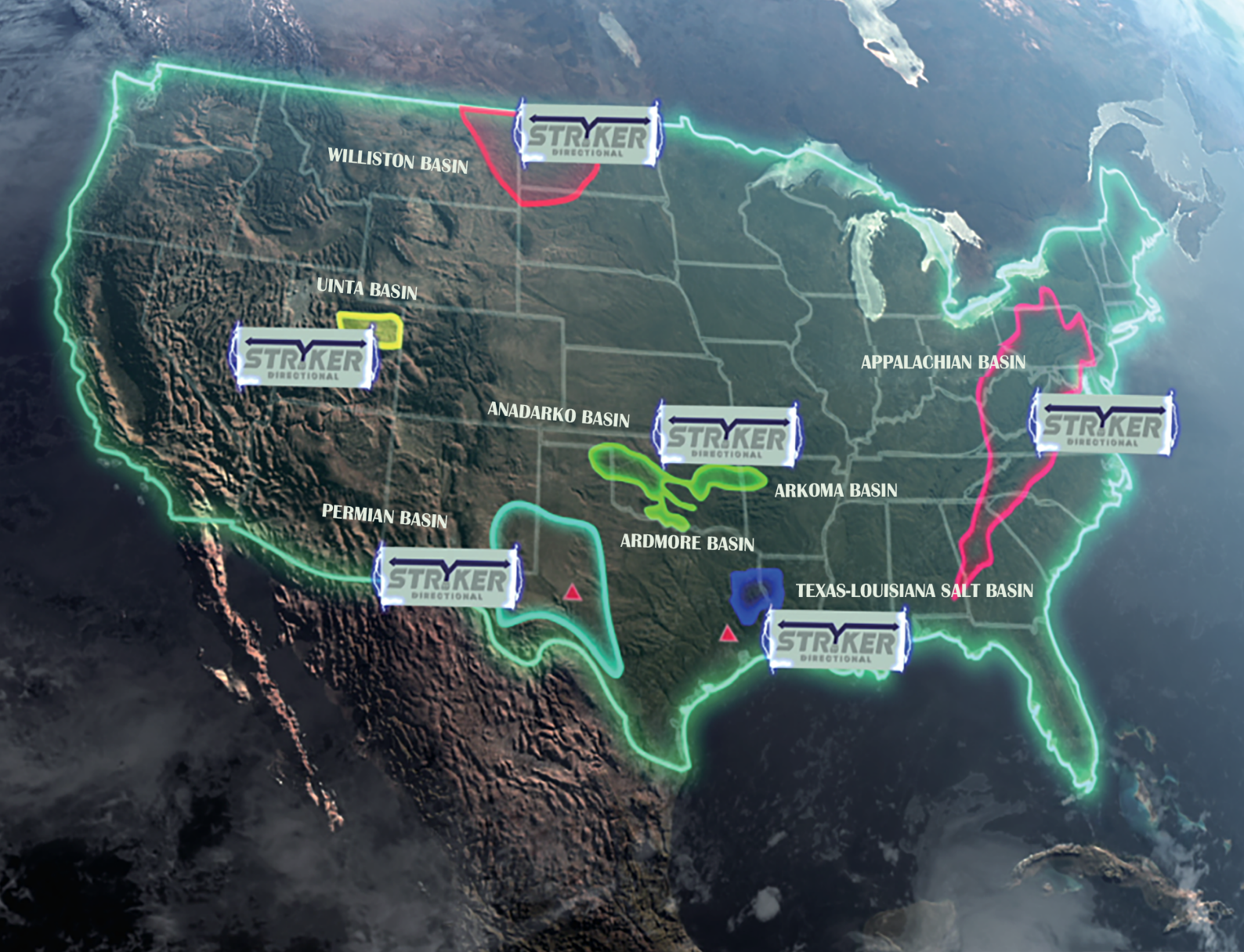
STRYKER

DIRECTIONAL



INDUSTRY LEADING EXPERIENCE

www.strykerdirectional.com



Stryker operates in key basins nationwide!

Stryker Directional operates in all domestic onshore basins utilizing owned high-performance drilling equipment, techniques, and software to provide expertise in all aspects of directional drilling, including: well planning, BHA design, project management and execution, and measurement services featuring MWD/EM and gamma.

www.strykerdirectional.com

STORM



Stryker's fleet of STORM motors are built and maintained in-house while undergoing a rigorous inspection process that exceeds industry standards for performance and reliability.



STORMSURGE



Stryker's STORMSURGE MWD tools are built by our experienced technicians with industry-leading components in our Conroe, TX R&M facility. Stryker's strict quality control standards allow us to stay on bottom with minimal downtime.



HAILSTORM

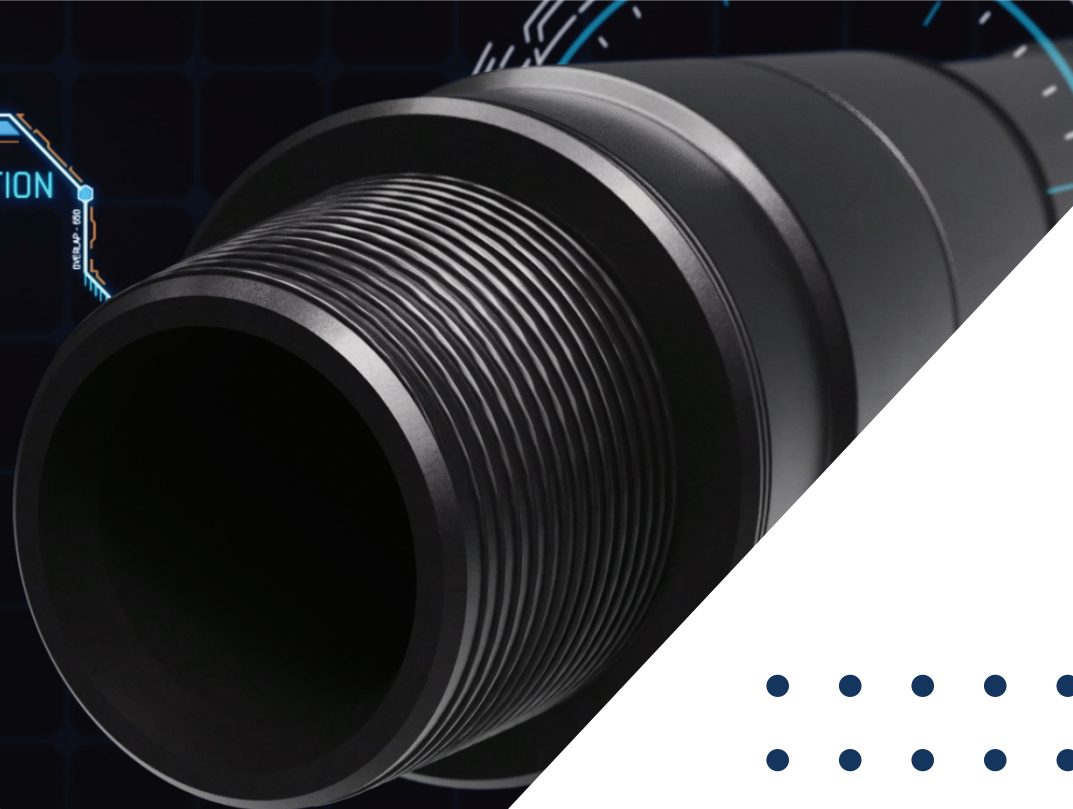


Stryker's HAILSTORM motors are built specifically to optimize RSS performance. Our exclusive bypass set-up has a proven track record of increasing ROP without compromising reliability.

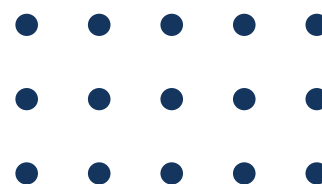


ST-500

BEST-IN-CLASS THREAD CONNECTION



ST-500



BEST- IN-CLASS THREAD CONNECTION

STRYKER DEVELOPED THE ST-500 THREAD CONNECTION SPECIFICALLY FOR MODERN DRILLING AND RSS APPLICATIONS. IT HAS PROVEN SUPERIOR AND LONGER LASTING THAN OTHER MARKET ALTERNATIVES.

www.strykerdirectional.com



MOTOR INVENTORY



SIZE	LOBES	STAGES	RPG	Flow Range (GPM)	BTB FXD	BTB ADJ	MAX DIFF	REC MAX DIFF	MAX OP TORQUE	
4.75	5/6	8.3	1	100-300	51"	62"	1960	1568	4980	
	7/8	5	0.62	150-300			1180	944	4670	
5	5/6	6.7	0.63	150-350	47.63"	N/A	1975	1580	6330	
	6/7	8	0.79	150-350	51"	N/A	1880	1504	6110	
		9.6	0.81	200-360		62"	1920	1536	7283	
		8.8	0.66	150-400	52.44"	N/A	2590	2070	7660	
5.125	7/8	8.2	0.7	150-350	51.1"	63.4"	1930	1544	6880	
5.5	5/6	6.7	0.63	150-400	53.88"	N/A	1975	1580	6330	
5 5.38 5.5	6/7	8.8	0.66		47.63" 53.88"		2590	2070	7660	
	7/8	8.3	0.5	200-400	53.88"		2450	1960	9737	
5 5.38 5.5	5/6	9.9	0.7	250-450	54.53"		2915	2330	8260	
	6/7	8.8	0.66	150-400			2590	2070	7660	
	7/8	8.3	0.5	200-400			2450	1960	9737	
6.63	7/8	8.1	0.26	300-700	60.63"		2400	1920	17950	
		5/6	8.2	0.43			300-600	2413	1930	11760
		6/7	7.8	0.29			350-700	2300	1840	15730
		7/8	6.4	0.27			300-650	1890	1510	13630
6.75 7	4/5	7	0.49	300-600	56"	68" / 57"	1650	1320	8820	
	6/7	8.1	0.39	300-700			1820	1456	12040	
	7/8	8.1	0.26	300-700			1820	1456	17950	
		3.5	0.15	300-600			790	632	13500	
		6	0.27	300-600			1410	1128	12780	
		6.4 Opti	0.23	300-650			1510	1208	13630	
	5	0.27	64.25"		N/A	1475	1180	10650		
	5.7	0.23		300-600		1675	1340	14200		
7 7.25	6/7	8.4 Opti	0.3	350-750	55"	68" / 57"	1300	1040	10840	
	7/8	8.5	0.26	400-740		68"	2000	1600	19540	
7.25		6.7	0.18	600-800	73.9"	N/A	1580	1264	21250	
7.13	5/6	8.3	0.38	400-750	54.88"		2450	1960	13030	
	7/8	8.5	0.26				2500	2000	19540	
8 9.625	4/5	5.3	0.24	300-950	72.3"	74.7 " / 87"	1250	1000	13620	
	6/7	4	0.09	400-900			940	752	13820	
	7/8	7	0.155	400-1000			2065	1650	25210	
		3.4	0.16	400-900			940	752	14830	
		4	0.16				1175	940	14830	
		5.9	0.155		68.50"		1740	1390	21870	
	8.25	7/8		7	69.00"		1740	1390	21870	
							2065	1650	25210	
9.625	6/7	5	0.13	600-1300	N/A	87.3"	1180	944	23860	



STORMSURGE MWD REVISIT BODY

- ✓ **STORMSURGE MWD tools are completely standardized across the entire fleet**
 - ✓ This yields predictable results that allow us to increase reliability and efficiency
 - ✓ Our MWD personnel also undergo standardized training to ensure that they are maintaining Stryker's standard operating procedures
- ✓ **Stryker's MWD department is geared towards constant improvement**
 - ✓ We treat every run as a learning opportunity which allows us to continuously evaluate and optimize our operations
 - ✓ Our Quality Control department exists to ensure that our tools meet the highest standards before arriving on location.
- ✓ **Stryker partners with the best vendors that the industry has to offer**
 - ✓ By engaging in regular audits of our vendors, we verify that our tools are being built with the highest quality components
 - ✓ As a result, our shop technicians are continuously learning about the applied theory of MWD operations and are developing a thorough understanding of our platform
- ✓ **These factors have allowed us to keep some of the top MWD success rates in the industry**
 - ✓ ZERO procedural related issues and an ongoing success rate of over 98% for all of 2023 and beyond
- ✓ **StrykOps Center**
 - ✓ Capable of fully remote MWD/LWD Operations
 - ✓ Quality Control review of all pre-run and post-run MWD data
 - ✓ Management of equipment recall



RSS

With an extensive inventory of owned Rotary Steerable Systems (RSS), Stryker optimizes wellbores with strategic placement, trajectory control, and smoother boreholes. In any drilling environment, the PowerDrive RSS family delivers top of the line performance and reliability that sets Stryker apart.



Applications

- ✓ High-performance drilling
- ✓ Complex fluid systems
- ✓ Extended-reach drilling

BENEFITS

- ✓ Improved drilling efficiency
- ✓ Enhanced trajectory control
- ✓ Precise kickoff from vertical
- ✓ Increased operating parameter window
- ✓ Reduces tortuosity



Features

- ✓ Performance-focused design
- ✓ Up to 350 revolutions per minute
- ✓ Metal-to-metal sealing on pad
- ✓ QuikDownlink* continuous-circulation downlink service
- ✓ Eight-sector near-bit azimuthal gamma ray
- ✓ Six-axis continuous survey
- ✓ Inclination and azimuth closed loops to provide advanced automated tangent controls
- ✓ Optional hybrid configuration

MISSION STATEMENT

Our mission is to develop lasting partnerships through the relentless pursuit of the perfect well.

WHO WE ARE

Stryker Directional is a full-service directional drilling company with experience in the most prominent onshore basins in the United States. Stryker's experienced crews work side-by-side with our customers, managing projects safely and keeping them on time and on budget. We believe in driving innovation, efficiency, and success in every project we undertake.

Conroe Location
13615 Poplar Circle
Conroe, TX 77304



Midland Location
6701 Farm to Market 307,
Midland, TX 79706
432-687-1121

Oklahoma City Location
3500 N Cimarron Rd Bldg A
Oklahoma, City, OK 73099

